

GROUND FLOOR LEVEL

Floor Level = RL:25.92

GROUND FLOOR WINDOWS

- D1 - 4.17W x 2.40H Top RL:###
- W2 - 1.22W x 0.91H Top RL:###
- W3 - 1.22W x 0.91H Top RL:###
- W4 - 1.22W x 0.91H Top RL:###
- W5 - 1.22W x 0.91H Top RL:###
- W6 - 1.22W x 0.91H Top RL:###
- W7 - 1.83W x 1.85H Top RL:###
- W8 - 1.83W x 1.85H Top RL:###
- W9 - 1.83W x 1.85H Top RL:###
- W10 - 1.83W x 1.85H Top RL:###
- D11 - 2.24W x 2.04H Top RL:###
- W12 - 2.75W x 1.83H Top RL:###
- W13 - 1.85W x 1.83H Top RL:###
- W14 - 1.85W x 1.83H Top RL:###
- W15 - 1.85W x 1.83H Top RL:###
- W16 - 1.85W x 1.83H Top RL:###
- W17 - 1.93W x 1.83H Top RL:###
- W18 - 1.22W x 0.91H Top RL:###
- W19 - 1.22W x 0.91H Top RL:###
- W20 - 1.22W x 0.91H Top RL:###
- W21 - 1.22W x 0.91H Top RL:###
- D22 - 3.82W x 2.04H Top RL:###
- W23 - 1.85W x 1.83H Top RL:###

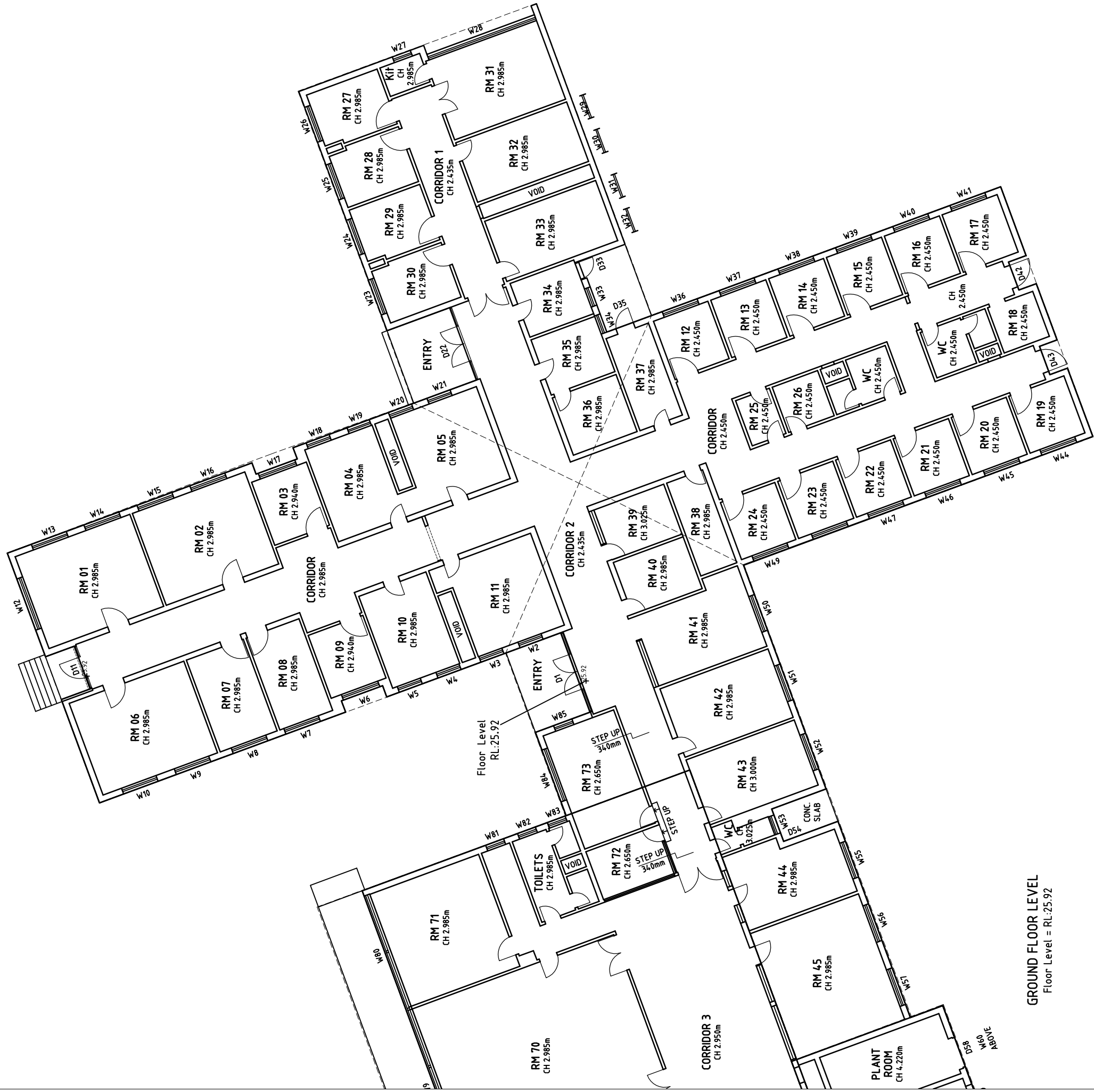
- W24 - 1.85W x 1.83H Top RL:###
- W25 - 1.85W x 1.83H Top RL:###
- W26 - 1.85W x 1.83H Top RL:###
- W27 - 0.95W x 0.92H Top RL:###
- W28 - 5.71W x 2.21H Top RL:###
- W29 - 1.22W x 0.91H Top RL:###
- W30 - 1.22W x 0.91H Top RL:###
- W31 - 1.22W x 0.91H Top RL:###
- W32 - 1.22W x 0.91H Top RL:###
- D33 - 0.91W x 2.04H Top RL:###
- W33 - 0.96W x 1.83H Top RL:###
- W34 - 0.96W x 1.83H Top RL:###
- D35 - 0.92W x 2.04H Top RL:###
- W36 - 1.85W x 1.83H Top RL:###
- W37 - 1.85W x 1.83H Top RL:###
- W38 - 1.85W x 1.83H Top RL:###
- W39 - 1.85W x 1.83H Top RL:###
- W40 - 1.85W x 1.83H Top RL:###
- W41 - 1.85W x 1.83H Top RL:###
- D42 - 1.14W x 2.04H Top RL:###
- D43 - 1.14W x 2.04H Top RL:###
- W44 - 1.85W x 1.83H Top RL:###
- W45 - 1.85W x 1.83H Top RL:###
- W46 - 1.85W x 1.83H Top RL:###

- W47 - 1.85W x 1.83H Top RL:###
- W48 - 1.85W x 1.83H Top RL:###
- W49 - 1.85W x 1.83H Top RL:###
- W50 - 1.88W x 1.82H Top RL:###
- W51 - 1.89W x 1.83H Top RL:###
- W52 - 1.89W x 1.83H Top RL:###
- W53 - 0.95W x ###H Top RL:###
- D54 - 0.81W x 2.04H Top RL:###
- W55 - 1.94W x 1.81H Top RL:###
- W56 - 1.94W x 1.81H Top RL:###
- W57 - 1.94W x 1.81H Top RL:###
- D58 - 1.54W x ###H Top RL:###
- W59 - 1.52W x ###H Top RL:###
- W60 - 1.54W x ###H Top RL:###
- W61 - 2.78W x 1.83H Top RL:###
- W62 - 2.78W x 1.83H Top RL:###
- W63 - 2.78W x 1.83H Top RL:###
- W64 - 1.80W x 1.00H Top RL:###
- W65 - 2.78W x 1.83H Top RL:###
- W66 - 2.78W x 1.83H Top RL:###
- W67 - 2.78W x 1.83H Top RL:###

- W68 - 2.78W x 1.83H Top RL:###
- D69 - 1.52W x ###H Top RL:###
- W70 - 0.91W x 0.89H Top RL:###
- W71 - 0.91W x 0.89H Top RL:###
- W72 - 2.76W x 1.83H Top RL:###
- W73 - 1.85W x 1.85H Top RL:###
- D74 - 5.82W x ###H Top RL:###
- W75 - 1.85W x 1.83H Top RL:###
- W76 - 1.85W x 1.83H Top RL:###
- W77 - 5.98W x 2.18H Top RL:###
- D78 - 1.01W x 2.04H Top RL:###
- W79 - 7.04W x 2.18H Top RL:###
- W80 - 5.91W x 2.18H Top RL:###
- W81 - 0.95W x 0.99H Top RL:###
- W82 - 0.95W x 0.99H Top RL:###
- W83 - 0.95W x 0.99H Top RL:###
- W84 - 2.75W x 1.50H Top RL:###
- W85 - 0.97W x 1.50H Top RL:###

All windows measured from inside.
±20mm Tolerance due to reveal thickness





GROUND FLOOR LEVEL
Floor Level = RL:25.92

GROUND FLOOR WINDOWS

- D1 - 4.17W x 2.40H Top RL:###
- W2 - 1.22W x 0.91H Top RL:###
- W3 - 1.22W x 0.91H Top RL:###
- W4 - 1.22W x 0.91H Top RL:###
- W5 - 1.22W x 0.91H Top RL:###
- W6 - 1.22W x 0.91H Top RL:###
- W7 - 1.83W x 1.85H Top RL:###
- W8 - 1.83W x 1.85H Top RL:###
- W9 - 1.83W x 1.85H Top RL:###
- W10 - 1.83W x 1.85H Top RL:###
- D11 - 2.24W x 2.04H Top RL:###
- W12 - 2.75W x 1.83H Top RL:###
- W13 - 1.85W x 1.83H Top RL:###
- W14 - 1.85W x 1.83H Top RL:###
- W15 - 1.85W x 1.83H Top RL:###
- W16 - 1.85W x 1.83H Top RL:###
- W17 - 1.93W x 1.83H Top RL:###
- W18 - 1.22W x 0.91H Top RL:###
- W19 - 1.22W x 0.91H Top RL:###
- W20 - 1.22W x 0.91H Top RL:###
- W21 - 1.22W x 0.91H Top RL:###
- D22 - 3.82W x 2.04H Top RL:###
- W23 - 1.85W x 1.83H Top RL:###

- W24 - 1.85W x 1.83H Top RL:###
- W25 - 1.85W x 1.83H Top RL:###
- W26 - 1.85W x 1.83H Top RL:###
- W27 - 0.95W x 0.92H Top RL:###
- W28 - 5.71W x 2.21H Top RL:###
- W29 - 1.22W x 0.91H Top RL:###
- W30 - 1.22W x 0.91H Top RL:###
- W31 - 1.22W x 0.91H Top RL:###
- W32 - 1.22W x 0.91H Top RL:###
- D33 - 0.91W x 2.04H Top RL:###
- W34 - 0.96W x 1.83H Top RL:###
- W35 - 0.96W x 1.83H Top RL:###
- D36 - 0.92W x 2.04H Top RL:###
- W37 - 1.85W x 1.83H Top RL:###
- W38 - 1.85W x 1.83H Top RL:###
- W39 - 1.85W x 1.83H Top RL:###
- W40 - 1.85W x 1.83H Top RL:###
- W41 - 1.85W x 1.83H Top RL:###
- D42 - 1.14W x 2.04H Top RL:###
- D43 - 1.14W x 2.04H Top RL:###
- W44 - 1.85W x 1.83H Top RL:###
- W45 - 1.85W x 1.83H Top RL:###
- W46 - 1.85W x 1.83H Top RL:###

- W47 - 1.85W x 1.83H Top RL:###
- W48 - 1.85W x 1.83H Top RL:###
- W49 - 1.85W x 1.83H Top RL:###
- W50 - 1.88W x 1.82H Top RL:###
- W51 - 1.89W x 1.83H Top RL:###
- W52 - 1.89W x 1.83H Top RL:###
- W53 - 0.95W x ###H Top RL:###
- D54 - 0.81W x 2.04H Top RL:###
- W55 - 1.94W x 1.81H Top RL:###
- W56 - 1.94W x 1.81H Top RL:###
- W57 - 1.94W x 1.81H Top RL:###
- D58 - 1.54W x ###H Top RL:###
- W59 - 1.52W x ###H Top RL:###
- W60 - 1.54W x ###H Top RL:###
- W61 - 2.78W x 1.83H Top RL:###
- W62 - 2.78W x 1.83H Top RL:###
- W63 - 2.78W x 1.83H Top RL:###
- W64 - 1.80W x 1.00H Top RL:###
- W65 - 2.78W x 1.83H Top RL:###
- W66 - 2.78W x 1.83H Top RL:###
- W67 - 2.78W x 1.83H Top RL:###

- W68 - 2.78W x 1.83H Top RL:###
- D69 - 1.52W x ###H Top RL:###
- W70 - 0.91W x 0.89H Top RL:###
- W71 - 0.91W x 0.89H Top RL:###
- W72 - 2.76W x 1.83H Top RL:###
- W73 - 1.85W x 1.85H Top RL:###
- D74 - 5.82W x ###H Top RL:###
- W75 - 1.85W x 1.83H Top RL:###
- W76 - 1.85W x 1.83H Top RL:###
- W77 - 5.98W x 2.18H Top RL:###
- D78 - 1.01W x 2.04H Top RL:###
- W79 - 7.04W x 2.18H Top RL:###
- W80 - 5.91W x 2.18H Top RL:###
- W81 - 0.95W x 0.99H Top RL:###
- W82 - 0.95W x 0.99H Top RL:###
- W83 - 0.95W x 0.99H Top RL:###
- W84 - 2.75W x 1.50H Top RL:###
- W85 - 0.97W x 1.50H Top RL:###

All windows measured from inside.
±20mm Tolerance due to reveal thickness

